

Distributor Name

CROMWELL®



EVERY PRODUCT, EVERY INDUSTRY, ONE SUPPLIER!™

KOBE Pistol Screwdriver Kit

SP1825K

1/4" NPT air inlet thread for 10mm air hose, 90PSI air pressure, 4cfm* air consumption, 45 - 115lbs/inch.

1/4" hex drive capacity.

Sound pressure level: 86dBA.

Sound power level: 102dBA.

Vibration level: 4.6m/s².

Overall length: 178mm.

Contents:

SP1825 screwdriver.

Hexagon wrench and spanner.

No.1, 2 and 3 x 50mm crosspoint bits.

4, 5 and 6mm x 50mm slotted bits.

No.2 x 100mm crosspoint double-ended bit.

*Based on a 15 second cycle per minute average use.



Free Speed (rpm)	Weight each	Order Code	Price/1 RND
1800	900g	KBE-279-3850	4433.90

2-Speed Cordless Impact Drill

ABH 18VET-2

No load speed: 0 - 510/1,600rpm.

Max torque: 20Nm.

Blows per minute: 0 - 20,000.

Capacities: Steel 13mm, aluminium 13mm, masonry 13mm, wood 38mm.

Battery capacities: 2x 2.0Ah NiCD.

Accessories: 1 hour charger, 2x crosspoint and 2x 50mm flat bit.



Free Speed (rpm)	Order Code	Price/1 RND
1600	KBE-279-0190K	3445.40

Offis Aluminium Laptop Cases

Protect laptops and accessories from damage. Locking aluminium case with padded liner and four positionable side pads. Two elasticated straps secure laptop in position whilst in transit. On the under side of the lid is an A4 document holder with two velcro fastening pockets and two pen holders. Supplied complete with nylon shoulder strap. Non-slip carry handle. Available as keyed or with combination locks.



Size	Internal Dimensions	Lock Type	Order Code	Price/1 RND
Book	340 x 250 x 50mm	Combination	OFI-802-0160K	293.40

SENIATOR QUALITY TOOLING Combined Socket & Wrench Tool Kit

The Seniator 200 Piece Combined Socket and Wrench Tool Kit comes with a plastic storage case. **Contents:** 1/2" drive sockets: 13, 16, 18, 21mm. **Drive deep sockets:** 16 to 22mm. **E-Sockets:** 20, 22, 24mm. **Screwdriver bits:** Hex 14mm, TX 70. **Converters:** 1/2" sq. male x 3/8" sq. female. **Accessories:** 125, 250mm extensions bars, 1/2" drive universal joint, T-bar, quick release offset bi-material ratchet handle. 3/8" drive sockets: 10 - 19mm. **Deep sockets:** 10 - 15mm. **Spark plug sockets:** 16, 18, 21mm. **E-Sockets:** 10 - 18mm. **Screwdriver bits:** Slotted 6 - 12. PZ No. 1, 2, 3. Crosspoint No.1, 2, 3, 4. Hex 6 - 12mm. TX 40 - 60. Tamper proof TX 40 - 60. Spline 5, 6, 8. **Converters:** 3/8" sq. female x 5/16" hex drive, 3/8" sq. female x 1/4" sq. male. **Accessories:** 75mm extension bar, universal joint, quick release offset bi-material ratchet handle. 1/4" drive sockets: 4 - 14mm.

Deep sockets: 4 - 10mm. **E-Sockets:** 4 - 8mm. **Screwdriver bits:** Slotted 4 - 7mm. PZ No.0, 1, 2. Crosspoint No.0, 1, 2, TX 8 - 30. Tamper-proof TX 8 - 30. Hex 3 - 6mm. **Converters:** 1/4" sq. female x 1/4" hex drive. **Accessories:** 50, 100mm extension bars, universal joint, T-bar, nut spinner handle, quick release offset bi-material ratchet handle.

Combination spanners: 8 - 19mm. **Hex key wrenches:** 1.5, 2.0, 2.5mm. **Magnetic bit:** 1/4" hex driver. **Screwdriver bits:** 1/4" hex driver. **Converter:** 2x 1/4" sq. male, **Slotted** 2x 3.5, 4mm 1x 5.5, 6.5, 8mm, **PZ** No.1, 2, 3, **Crosspoint** 2x No.0, 1, 2, 3, TX 10, 15, 20, 25, 27, 30, 40, **Tri-Wing** No.1, 2, 3, 4, **Square** 1, 2, 3, hex 2, 3, 4, 5, 6, 7mm.



Number of Pieces	Weight each	Order Code	Price/1 RND
208	10.7kg	SEN-582-9000K	4434.70

TUFFSAFE Waterproof High Visibility Jackets

Two hip pockets with velcro fastened flaps. Drawstring hood. Knitted storm cuffs. Two way zip front with studded storm flap. Inside pocket.

PREN343 1993:

Class 3 (highest) water penetration;
Class 1 (lowest) water vapour resistance.

BSEN471 1994:

Class 3 area of fluorescent background and retro reflective tape.

BSEN471 1994:

Class 2 retro reflective tape performance.



Waterproof



EN343



EN471

Available Sizes & Selection:

Fit according to chest size. This garment has a 20cm allowance built in for comfort and to allow the garment to be worn over light layers of clothing. If bulkier clothing has to be worn underneath, a larger size may be required.

Sizing Guide

Size	Chest (ins)	Chest (cms)	Height
M	37-39	92-100	170-176
L	39-43	100-108	176-182
XL	43-46	108-116	182-188
2XL	46-49	116-124	188-194

Mixed Fibre Gloves

Poly/cotton mix. Knitted wrist. Multi-purpose handling gloves



For Minimal Risk Only

These garments comply with the requirements of Directive 89/686/EEC and the above reference standards.

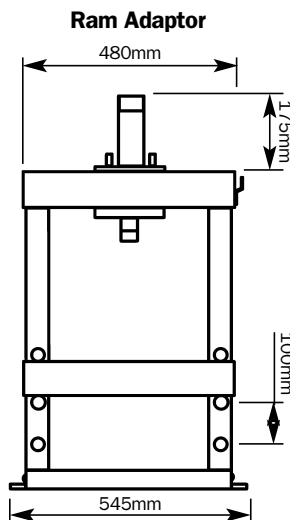
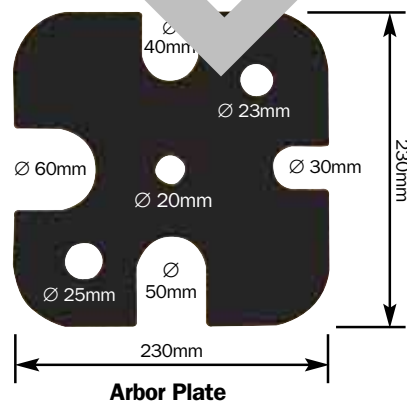
Bands	Size	Weight each	Order Code	Price/1 RND
Body	M	1.4kg	TFF-962	2.90
Braces			-4111B	

Size	Weight per 12	Order Code	Price/Pr RND
	1.10kg	TFF-961	5.00
	1.10kg	-1050K	5.00
		-1055K	5.00

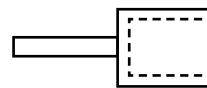
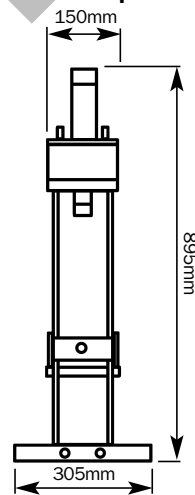
KENNEDY Hydraulic Bench Press

Ideal for pressing, bending and extruding. Built strong durable in industrial and automotive workshops, manufactured welded steel frame with two end braces for stability and a fully adjustable work bed providing flexibility and convenience. Fitted with detachable punch ram allowing hydraulics to be used for other purposes when the press is not being used. Hydraulic gauge is included. These hydraulic presses are ideal for assembly, straightening, fabrication, quality control, maintenance, product testing, bending, forming, punching and shearing.

Model number	HBP010	Capacity (metric ton or t)	10
Capacity	10 tonne		22000kg
Ram diameter	150mm	Capacity (imperial ton)	1
Extension screw	60mm		2240lbs (1016kg)
Height of ram to table	300mm		
Height of ram to table	90mm		
Aperture	140mm		
Work table width	360mm		
Overall height	895mm		
Hydraulic gauge included			
Weight	47kg		



Ram Adaptor



Model Number	Capacity	Overall Height (mm)	Weight each	Order Code	Price/1 RND
HBP010	10 Tonne	895	47kg	KEN-985	6041.20
				-5000K	